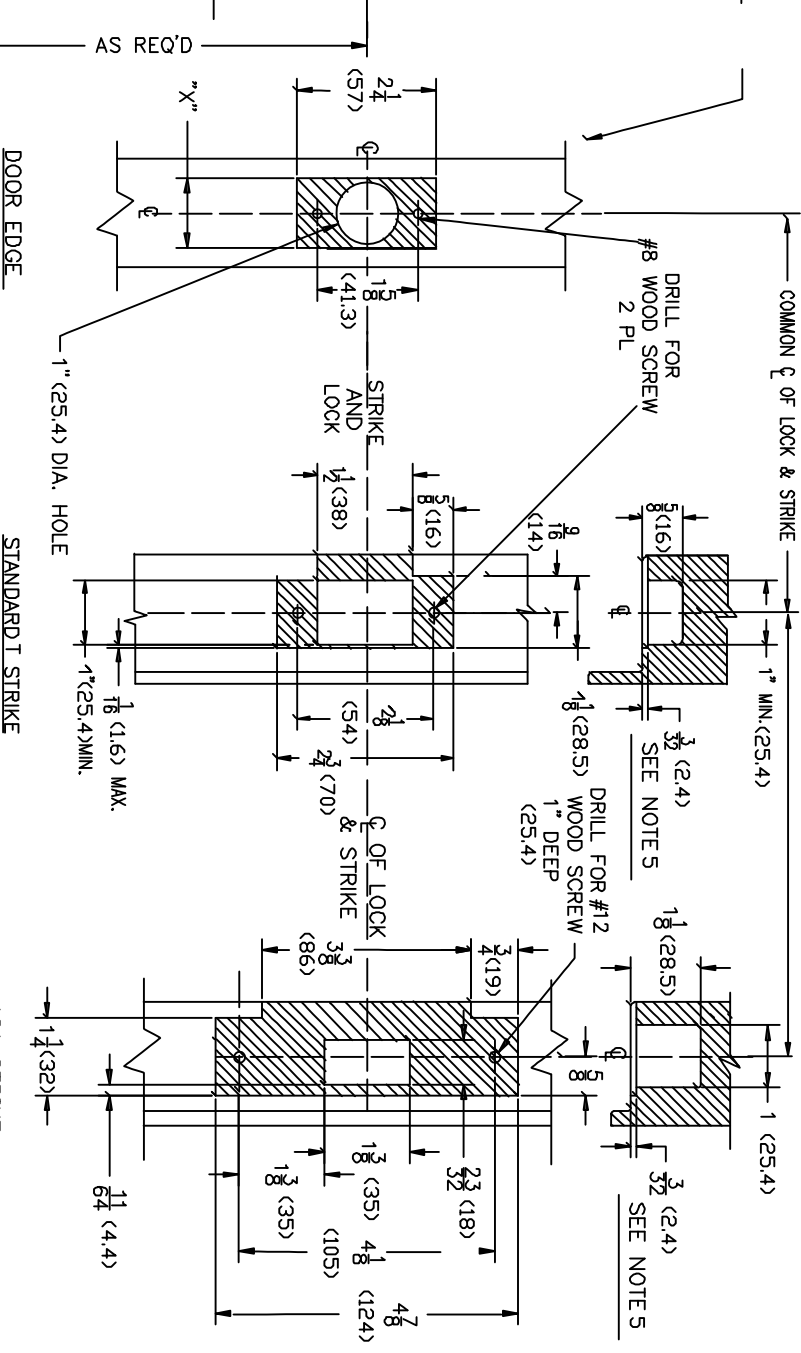


BACKSET	"X"
2 3/8" (60)	1" (25.4)
2 3/4" (70)	1 1/8" (28.5)



- NOTES:**
- 1) DO NOT SCALE DRAWING
  - 2) SEE DETAIL "A" BEFORE MACHINING
  - 3) DETERMINE BACKSET BEFORE MACHINING
  - 4) VERIFY FACE PLATE DIMENSION "X"
  - 5) WHEN USING BACK BOX ADD DIMENSION



Brookline Industries  
 1624 South Clinton Street  
 Chicago, IL 60616 USA  
<http://brooklineind.com>

**DIMENSIONS ARE INCHES ( ) ARE IN MILLIMETERS.**

# A251 COMMUNICATION DEADLATCH CYL X BLANK FOR WOOD DOORS

TEMPLATE NUMBER: **T-A251W Rev1**

DATE: 01-01-2006