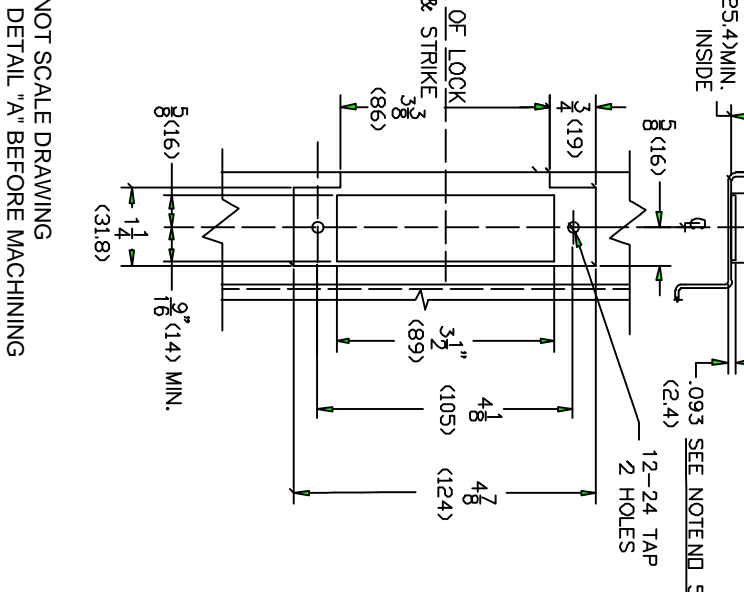
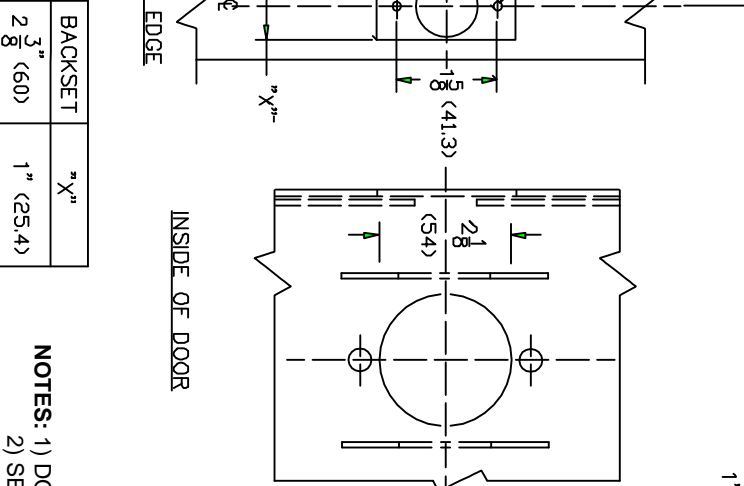
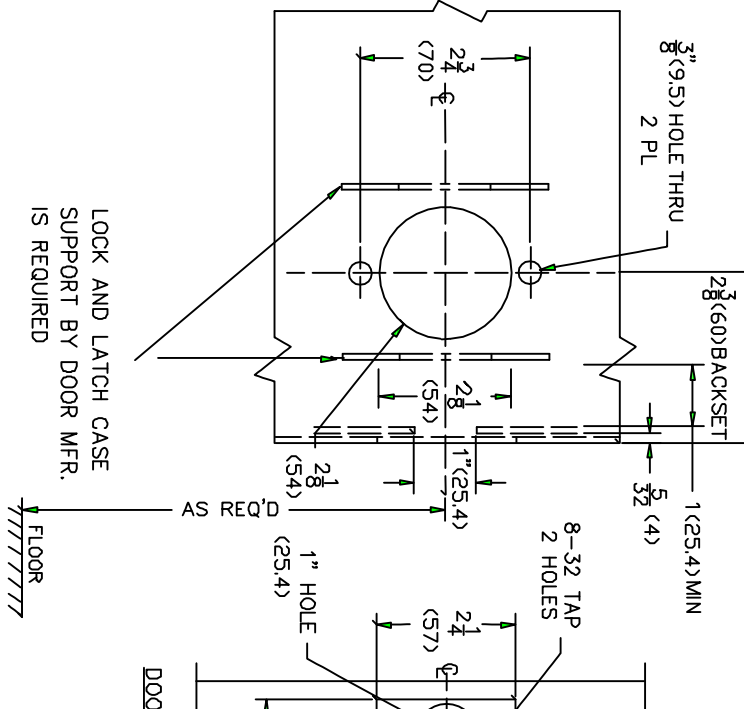


DETAIL "A"



BACKSET	"X"
2 3/8 (60)	1" (25.4)
2 3/4 (70)	1 1/8 (28.6)

- NOTES:**
- 1) DO NOT SCALE DRAWING
 - 2) SEE DETAIL "A" BEFORE MACHINING
 - 3) DETERMINE BACKSET BEFORE MACHINING
 - 4) VERIFY FACE STRIKE DIMENSION "X"
 - 5) WHEN USING STRIKE BOX ADD DIMENSION
 - 6) THIS TEMPLATE NOT FOR ELECTRIFIED LOCKS

LOCK AND LATCH CASE
SUPPORT BY DOOR MFR.
IS REQUIRED

AS REQ'D
FLOOR

OUTSIDE OF DOOR

DOOR EDGE

INSIDE OF DOOR



Brookline Industries
1624 South Clinton Street
Chicago, IL 60616 USA
<http://brooklineind.com>

C300 GRADE 1 CYLINDRICAL LOCK FOR METAL DOORS

DIMENSIONS ARE INCHES () ARE IN MILLIMETERS.

TEMPLATE NUMBER: **T-C300M Rev1**

DATE: 01-01-2006