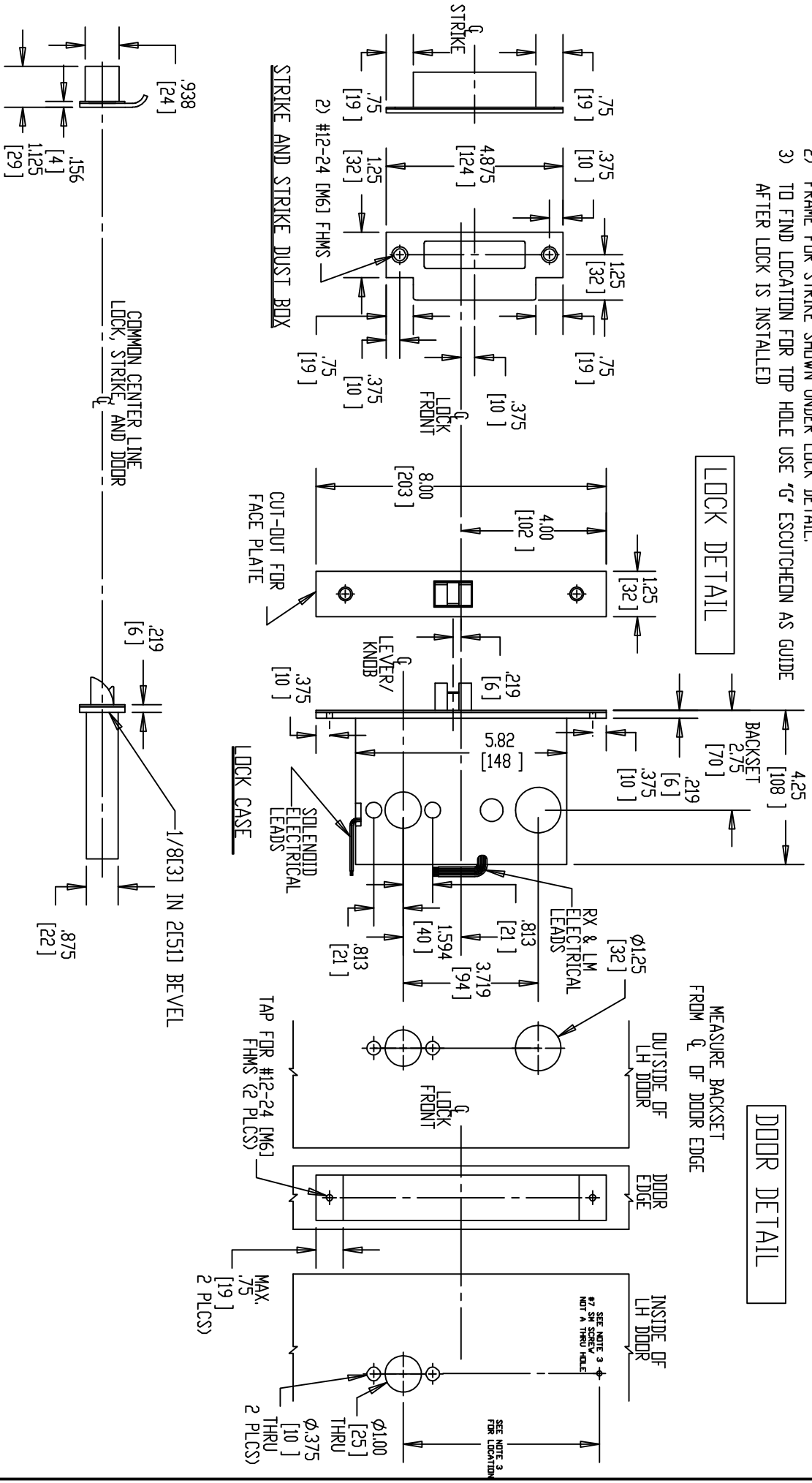


- NOTE: 1) DDDR CUT-OUTS AS INDICATED UNDER DDDR DETAIL.  
 2) FRAME FOR STRIKE SHOWN UNDER LOCK DETAIL.  
 3) TO FIND LOCATION FOR TOP HOLE USE "G" ESCUTCHEON AS GUIDE AFTER LOCK IS INSTALLED



DO NOT SCALE DRAWING.



Brookline Industries  
 1624 South Clinton Street  
 Chicago, IL 60616 USA  
<http://brooklineind.com>

DIMENSIONS ARE INCHES ( ) ARE IN MILLIMETERS.

DOOR DETAIL

MEASURE BACKSET FROM  $\phi$  OF DDDR EDGE

OUTSIDE OF LH DDDR  
 DDDR EDGE  
 INSIDE OF LH DDDR

SEE NOTE 3 FOR LOCATION  
 $\phi$ 1.00 [25] THRU  
 $\phi$ 0.375 [10] THRU 2 PLCS

SEE NOTE 3 FOR LOCATION  
 $\phi$ 1.00 [25] THRU  
 $\phi$ 0.375 [10] THRU 2 PLCS

MAX.  $\phi$ 0.75 [19] 2 PLCS

TAP FOR #12-24 [M6] FHMS (2 PLCS)

1/8[R3] IN 2[51] BEVEL

COMMON CENTER LINE  
 LOCK, STRIKE, AND DDDR

1/8[R3] IN 2[51] BEVEL

# M3080EUR (REX) "G" ESCUTCHEON FOR METAL DOORS

TEMPLATE NUMBER: T-M3080EUR GM Rev1

DATE: 01-01-10