



Chicago Illinois USA www.brooklineind.com

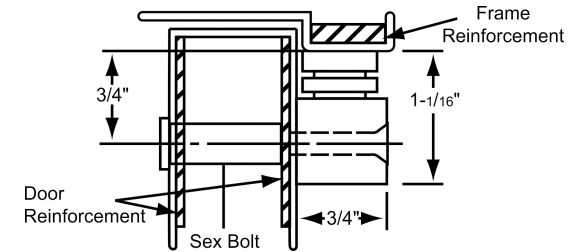
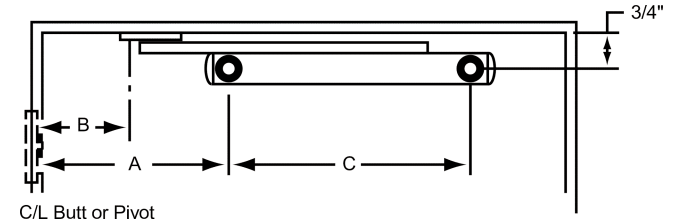
SureStop® Installation Template
SURFACE STOPS & HOLDERS
1555F (FRICTION)
1555H (HOLD OPEN)
1555S (STOP)

TEMPLATE NO. T1555
T1555 Rev. 2 01/2010
 Dimensions in inches

For metric dimensions, see Template T1555m

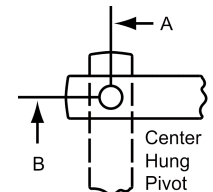
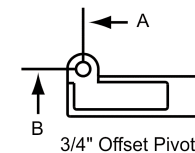
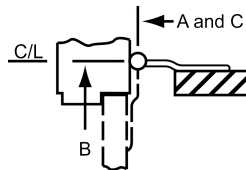
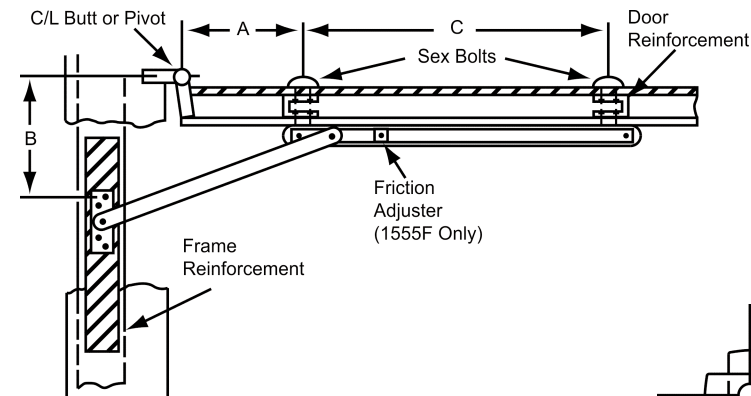
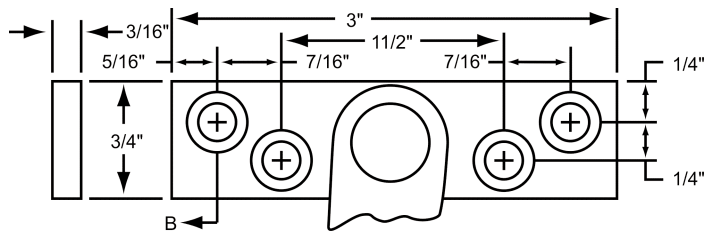
Installation Instructions

- Determine the degree of Hold Open or Dead Stop required. Select proper dimensions from table on page 2
 Note: Dead Stop is the maximum opening point with maximum spring compression.
 A and B dimensions are measured from hinge or pivot center, not door edge.
- Locate "A" and "B" dimension on door and frame.
- Surface mount jamb bracket on stop strip as shown.
- Position channel on door with shock end located towards hinge or pivot.
 Drill 5/16" dia. hole for sex bolt at "A" dimension, 3/4" down from stop strip as shown
- Install channel on door with sex bolt at "A" dimension.
- Locate sex bolt hole at "C" dimension. Before drilling "C" Dimension hole be sure channel is parallel with the stop strip to insure smooth operation.
 Drill 5/16" dia. sex bolt hole and complete the installation.
- Install Stop or Holder with hardware provided.



NOTES:

- * All hollow metal frames to have 3/16" min. thickness x 12" min. length reinforcing plates as shown in illustration.
- * Mount stop or holder first then other hardware to clear. If interference occurs with other hardware please contact Brookline
- * Be aware of the clearance behind the door. Do not forget to take the hardware projection into your calculation.



Fastener Information	
Jamb	Door
#12-24 x 1/2" FHMS or #12 x 1-1/2" FHWS (4 locations)	#12-24 x 1-1/2" FHMS or #12 x 1-1/2" FHWS (2 locations)

CAUTION:
 Note location of swing clear hinge centerline to determine "A" and "B" dimensions.



**SureStop® Installation Template
SURFACE STOPS & HOLDERS
1555F (FRICTION)
1555H (HOLD OPEN)
1555S (STOP)**

**TEMPLATE NO. T1555
T1555 Rev. 2 01/2010
Dimensions in inches**

Chicago Illinois USA www.brooklineind.com

For metric dimensions, see Template T1555m

Notes:

1. This page (2) is for door and jamb preparation. See page 1 for installation instructions
2. Model numbers: Suffix "F" = Friction; "H" = Hold Open; "S" = Stop
Suffixes A, B, C, D and E indicate Size
3. A, B and C dimensions from C/L of pivot, not door edge.
4. Dead Stop is the maximum opening width with maximum spring compression.
When Dead Stop is required add 5/8" to "A" dimension.

Check pivot manufacturer's compatibility prior to specifying Center Hung Pivots

* Butt mounting only
Reversible / non-handed

For Doors 1 3/4 - 2 1/4 on Butt Hinges or 3/4 Offset Pivots

Model			Open Angle	85°				90°				95°				100°				105°				110°				
				H.O.		D.S.		H.O.		D.S.		H.O.		D.S.		H.O.		D.S.		H.O.		D.S.		H.O.		D.S.		
Friction	Hold-Open	Stop	Door Opening	A	B	A	B	A	B	A	B	A	B	A	B	A	B	A	B	A	B	A	B	A	B	C		
1555FA	1555HA	1555SA	18 - 24	2 1/4	4 5/8	2 7/8	4 5/8	1 15/16	4 5/16	2 3/16	4 5/16	1 5/8	4	2 1/4	4	1 3/8	3 3/4	2	3 3/4	1 3/16	3 9/16	1 13/16	3 9/16	--	--	1 9/16	3 5/16	13 11/16
1555FB	1555HB	1555SB	24 1/16-30	6 7/16	5 11/16	7 1/16	5 11/16	6 1/16	5 9/16	6 11/16	5 5/16	5 11/16	4 15/16	6 3/16	4 15/16	5 3/8	4 5/8	6	4 5/8	5 1/8	4 3/8	5 3/4	4 3/8	4 7/8	4 3/16	5 1/2	4 3/16	14 13/16
1555FC	1555HC	1555SC	30 1/16-36	9 9/16	7 1/4	10 3/16	7 1/4	9 1/8	6 13/16	9 3/4	6 13/16	8 11/16	6 3/8	9 9/16	6 3/8	8 5/16	6	8 15/16	6	8	5 11/16	8 5/8	5 11/16	7 11/16	5 3/8	8 5/16	5 3/8	16 5/8
1555FD	1555HD	1555SD	36 1/16-42	13 3/16	9 3/8	13 13/16	9 3/8	12 5/8	8 13/16	13 1/4	8 13/16	12 1/16	8 1/4	12 11/16	8 1/4	11 5/8	7 13/16	12 1/4	7 13/16	11 1/4	7 7/16	11 7/8	7 7/16	10 7/8	7 1/16	11 1/2	7 1/16	19 1/8
1555FE	1555HE	1555SE	42 1/16-48	17 9/16	11	18 3/16	11	16 7/8	10 5/16	17 1/2	10 5/16	16 1/4	9 11/16	16 7/8	9 11/16	15 3/4	9 3/16	16 3/8	9 3/16	15 1/4	8 11/16	15 7/8	8 11/16	14 7/8	8 5/16	15 1/2	8 5/16	20 7/8

For Doors 1 3/8 - 1 5/8 on Butt Hinges or 3/4 Offset Pivots

Model			Open Angle	85°				90°				95°				100°				105°				110°				
				H.O.		D.S.		H.O.		D.S.		H.O.		D.S.		H.O.		D.S.		H.O.		D.S.		H.O.		D.S.		
Friction	Hold-Open	Stop	Door Opening	A	B	A	B	A	B	A	B	A	B	A	B	A	B	A	B	A	B	A	B	A	B	A	B	C
1555FA	1555HA	1555SA	18 - 24	2 5/16	4 11/16	2 15/16	4 11/16	2 1/16	4 7/16	2 11/16	4 7/16	1 3/4	4 1/8	2 3/8	4 1/8	1 9/16	3 15/16	2 3/16	3 15/16	1 3/8	3 3/4	2	3 3/4	--	--	1 13/16	3 9/16	13 11/16
1555FB	1555HB	1555SB	24 1/16-30	6 11/16	5 15/16	7 9/16	5 15/16	6 1/4	5 1/2	6 7/8	5 1/2	5 7/8	5 1/8	6 1/2	5 1/8	5 5/8	4 7/8	6 1/4	4 7/8	5 3/8	4 5/8	6	4 5/8	5 1/8	4 3/8	5 3/4	4 3/8	14 13/16
1555FC	1555HC	1555SC	30 1/16-36	9 3/4	7 7/16	10 3/8	7 7/16	9 5/16	7	9 15/16	7	8 7/8	6 9/16	9 1/2	6 9/16	8 1/2	6 3/16	9 1/8	6 3/16	8 3/16	5 13/16	8 13/16	5 13/16	7 7/8	5 9/16	8 1/2	5 9/16	16 5/8
1555FD	1555HD	1555SD	36 1/16-42	13 3/8	9 9/16	14	9 9/16	12 13/16	9	13 7/16	9	12 1/4	8 7/16	12 7/8	8 7/16	11 13/16	8	12 7/16	8	11 7/16	7 5/8	12 1/16	7 5/8	11 1/16	7 1/4	11 1/16	7 1/4	19 1/8
1555FE	1555HE	1555SE	42 1/16-48	17 3/4	11 3/16	18 3/8	11 3/16	17 1/16	10 1/2	17 11/16	10 1/2	16 7/16	9 7/8	17 1/16	9 7/8	15 15/16	9 3/8	16 9/16	9 3/8	15 7/16	8 7/8	16 1/16	8 7/8	15 1/16	8 1/2	15 11/16	8 1/2	20 7/8

For Doors 1 3/4 - 2 1/4 on Center Hung Pivots

Model			Open Angle	85°				90°				95°				100°				105°				110°				
				H.O.		D.S.		H.O.		D.S.		H.O.		D.S.		H.O.		D.S.		H.O.		D.S.		H.O.		D.S.		
Friction	Hold-Open	Stop	Door Opening	A	B	A	B	A	B	A	B	A	B	A	B	A	B	A	B	A	B	A	B	A	B	A	B	C
1555FA	1555HA	1555SA	21 1/2-26 1/2	2 3/4	5 1/8	3 3/8	5 1/8	2 7/16	4 13/16	3 1/16	4 13/16	2 3/16	4 9/16	2 13/16	4 9/16	1 15/16	4 5/16	2 9/16	4 5/16	1 3/4	4 1/8	2 3/8	4 1/8	1 5/8	4	2 1/4	4	13 11/16
1555FB	1555HB	1555SB	26 9/16-32	7 1/8	6 3/8	7 3/4	6 3/8	6 11/16	5 15/16	7 5/16	5 15/16	6 3/8	5 5/8	7	5 5/8	6 1/16	5 5/16	6 11/16	5 5/16	5 13/16	5 1/16	6 7/16	5 1/16	5 9/16	4 13/16	6 13/16	4 13/16	14 13/16
1555FC	1555HC	1555SC	32 1/16-38	10 3/16	7 7/8	10 13/16	7 7/8	9 3/4	7 7/16	10 3/8	7 7/16	9 5/16	7	9 15/16	7	8 15/16	6 5/8	9 9/16	6 5/8	8 9/16	6 1/4	9 3/16	6 1/4	8 5/16	6	8 15/16	6	16 5/8
1555FD	1555HD	1555SD	38 1/16-45	13 7/8	10 1/16	14 1/2	10 1/16	13 1/4	9 7/16	13 7/8	9 7/16	12 3/4	18 15/16	13 3/8	18 15/16	12 5/16	8 1/2	12 15/16	8 1/2	11 7/8	8 1/16	12 1/2	8 1/16	11 9/16	7 3/4	12 3/16	7 3/4	19 1/8
1555FE	1555HE	1555SE	45 1/16-48	18 1/4	11 11/16	18 7/8	11 11/16	17 1/2	10 15/16	18 1/8	10 15/16	16 7/8	10 5/16	17 1/2	10 5/16	16 3/8	9 13/16	17	9 13/16	15 7/8	9 5/16	16 1/2	9 5/16	15 1/2	8 15/16	16 1/8	8 15/16	20 7/8