



Chicago Illinois USA www.brooklineind.com

SureStop® Installation Template
SURFACE STOPS & HOLDERS
1555F (FRICTION)
1555H (HOLD OPEN)
1555S (STOP)

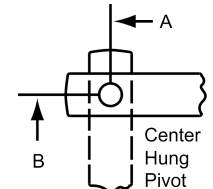
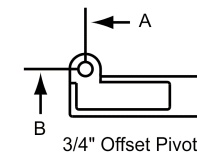
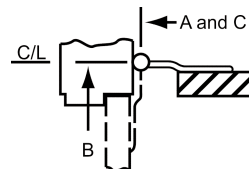
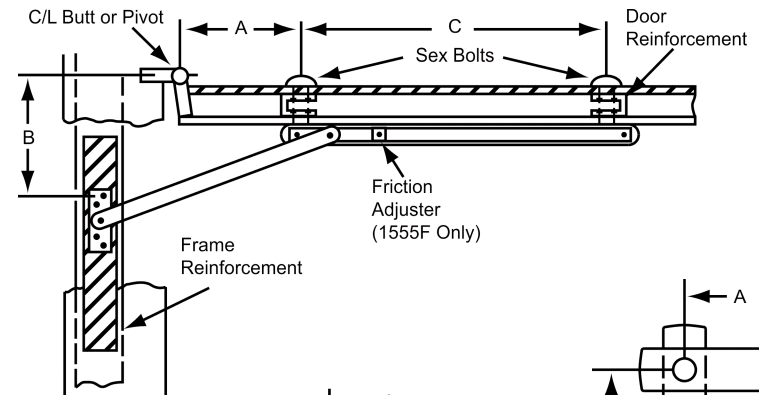
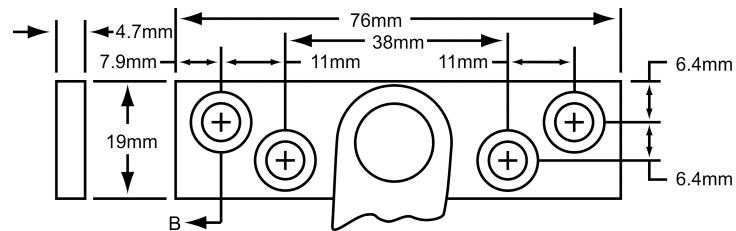
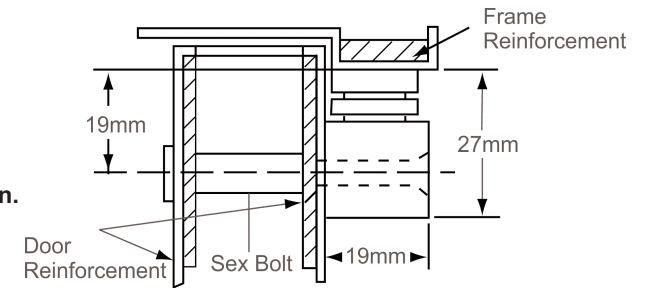
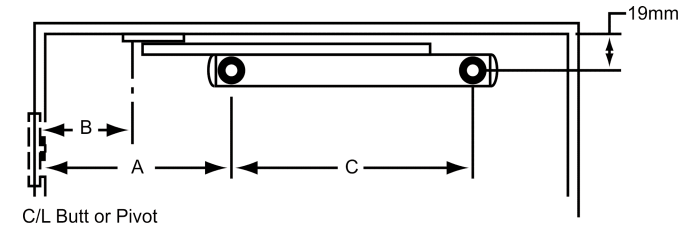
TEMPLATE NO. T1555m
T1555m Rev. 2 01/2010
 Dimensions in millimeters
 For inch dimensions, see Template T1555

Installation Instructions

- Determine the degree of Hold Open or Dead Stop required. Select proper dimensions from table on page 2
 Note: Dead Stop is the maximum opening point with maximum spring compression.
 A and B dimensions are measured from hinge or pivot center, not door edge.
- Locate "A" and "B" dimension on door and frame.
- Surface mount jamb bracket on stop strip as shown.
- Position channel on door with shock end located towards hinge or pivot.
 Drill 8mm dia. hole for sex bolt at "A" dimension, 19mm down from stop strip as shown
- Install channel on door with sex bolt at "A" dimension.
- Locate sex bolt hole at "C" dimension. Before drilling "C" Dimension hole be sure channel is parallel with the stop strip to insure smooth operation.
 Drill 8mm dia. sex bolt hole and complete the installation.
- Install Stop or Holder with hardware provided.

NOTES:

- All hollow metal frames to have 4.7mm min. thickness x 305mm min. length reinforcing plates as shown in illustration.
- Mount stop or holder first then other hardware to clear. If interference occurs with other hardware please contact Brookline
- Be aware of the clearance behind the door. Do not forget to take the hardware projection into your calculation.



Fastener Information	
Jamb	Door
#12-24 x 1/2" FHMS or #12 x 1-1/2" FHWS (4 locations)	#12-24 x 1-1/2" FHMS or #12 x 1-1/2" FHWS (2 locations)

CAUTION:
 Note location of swing clear hinge centerline to determine "A" and "B" dimensions.



**SureStop® Installation Template
SURFACE STOPS & HOLDERS
1555F (FRICTION)
1555H (HOLD OPEN)
1555S (STOP)**

**TEMPLATE NO. T1555m
T1555m Rev. 2 01/2010
Dimensions in millimeters**

Chicago Illinois USA www.brooklineind.com

For inch dimensions, see Template T1555

Notes:

- This page (2) is for door and jamb preparation. See page 1 for installation instructions
- Model numbers: Suffix "F" = Friction; "H" = Hold Open; "S" = Stop
Suffixes A, B, C, D and E indicate Size
- A, B and C dimensions from C/L of pivot, not door edge.
- Dead Stop is the maximum opening point with maximum spring compression.
When Dead Stop is required add 16mm to "A" dimension.

Check pivot manufacturer's compatibility prior to specifying Center Hung Pivots

* Butt mounting only
Reversible / non-handed

For Doors 44mm - 57mm on Butt Hinges or 3/4 Offset Pivots

Model			Open Angle	85°				90°				95°				100°				105°				110°				
				H.O.		D.S.		H.O.		D.S.		H.O.		D.S.		H.O.		D.S.		H.O.		D.S.		H.O.		D.S.		
Friction	Hold-Open	Stop	Door Opening	A	B	A	B	A	B	A	B	A	B	A	B	A	B	A	B	A	B	A	B	A	B	A	B	C
1555FA	1555HA	1555SA	*457-610	57	118	73	118	49	110	65	110	41	102	57	102	35	95	51	95	30	90	46	90	--	--	40	84	348
1555FB	1555HB	1555SB	611-762	164	145	179	145	154	151	170	135	144	125	160	125	137	117	152	117	130	111	146	111	124	106	140	106	376
1555FC	1555HC	1555SC	764-914	243	184	259	184	232	173	248	173	221	162	237	162	211	152	227	152	203	144	219	144	195	137	211	137	422
1555FD	1555HD	1555SD	916-1067	335	238	351	238	321	224	337	224	306	210	322	210	279	198	311	198	286	189	302	189	276	179	292	179	503
1555FE	1555HE	1555SE	1068-1219	446	279	462	279	429	278	445	262	413	246	429	246	400	233	416	233	387	221	403	221	378	227	394	211	528

For Doors 35mm - 41mm on Butt Hinges or 3/4 Offset Pivots

Model			Open Angle	85°				90°				95°				100°				105°				110°				
				H.O.		D.S.		H.O.		D.S.		H.O.		D.S.		H.O.		D.S.		H.O.		D.S.		H.O.		D.S.		
Friction	Hold-Open	Stop	Door Opening	A	B	A	B	A	B	A	B	A	B	A	B	A	B	A	B	A	B	A	B	A	B	A	B	C
1555FA	1555HA	1555SA	*457-610	59	119	75	119	52	113	68	113	44	105	60	105	40	100	56	100	35	95	51	95	--	--	46	90	348
1555FB	1555HB	1555SB	611-762	170	151	186	135	159	140	175	140	149	130	165	130	143	124	159	200	137	117	152	117	130	111	146	111	376
1555FC	1555HC	1555SC	764-914	248	189	264	189	237	178	252	178	225	167	241	167	216	157	232	157	208	148	224	148	200	141	216	141	422
1555FD	1555HD	1555SD	916-1067	340	243	356	243	325	229	341	229	311	214	327	214	300	203	316	203	291	194	306	194	281	184	281	184	486
1555FE	1555HE	1555SE	1068-1219	451	284	467	284	433	267	449	267	418	251	433	251	405	238	412	238	392	225	408	225	383	216	398	216	530

For Doors 44mm - 57mm on Center Hung Pivots

Model			Open Angle	85°				90°				95°				100°				105°				110°					
				H.O.		D.S.		H.O.		D.S.		H.O.		D.S.		H.O.		D.S.		H.O.		D.S.		H.O.		D.S.		C	
Friction	Hold-Open	Stop	Door Opening	A	B	A	B	A	B	A	B	A	B	A	B	A	B	A	B	A	B	A	B	A	B	C	E	F	
—	—	—	—	—	—	—	—	—	—	—	—	—	—	—	—	—	—	—	—	—	—	—	—	—	—	—	—	—	
1555FB	1555HB	1555SB	675-813	178	162	197	162	170	151	186	151	162	143	178	143	157	135	170	135	148	383	162	131	141	122	173	122	360	
1555FC	1555HC	1555SC	814-965	259	200	275	200	248	189	264	189	252	178	253	178	227	168	243	168	217	159	233	159	211	152	227	152	422	
1555FD	1555HD	1555SD	969-1143	352	256	368	256	337	240	352	240	324	481	340	481	313	216	329	216	302	205	318	205	294	197	310	197	486	
1555FE	1555HE	1555SE	1145-1219	464	297	479	297	445	278	460	278	429	262	445	262	416	249	432	249	403	237	419	237	394	227	410	227	530	